



PartnerDirect

Bringing it all together with Dell:
Everything you need in one place.

Works the way
you want.





PartnerDirect



Contents

Introduction

Introduction	4
Latitude E-Family laptops	5
OptiPlex desktops	5
Dell Precision workstations	5

Dell Services

Customise your service plan	6
We're here to help	7
Why Dell for support?	7
Configurable support services	8

Dell Latitude

Introducing the Latitude E-Family	10
Everything you need from start to finish — without overcomplicating IT	11
Latitude laptop family	11
Latitude 2120 netbook	13
Latitude E5420	13
Latitude E5520	13
Latitude E6220	13
Latitude E6320	13
Latitude E6520	13
Latitude E6420	13
Latitude E6420 ATG	13
Latitude XT3	13
Latitude ST slate	13

Dell OptiPlex

OptiPlex 990 desktop	14
OptiPlex 790	15
OptiPlex 390 mini-tower	17

Dell Precision

Dell Precision T1600	19
Dell Precision T3500	19
Dell Precision T5500	19
Dell Precision T7500	19
Dell Precision M4600	21
Dell Precision M6600	21
Dell Precision R5500	21

Dell PowerEdge

PowerEdge M610X	23
PowerEdge M710HD	23
PowerEdge T110ii	23
PowerEdge T710	23
PowerEdge R210 II	23
PowerEdge R510	23
Meet the world's first servers with instant-on management	25
PowerEdge R815	26
PowerEdge M915	26
PowerEdge C6145	26
There's never been a better time to virtualise	27
PowerEdge 2420, PowerEdge 4220 and PowerEdge 4820	28
Dell KVM 4322DS	29
Dell KVM 1082DS	29
Dell KVM 2162DS	29
What makes Dell server solutions so reliable?	30
Dell differentiation with breakthrough innovations	30
Introducing the Dell PowerEdge server solution	31

Dell EqualLogic

EqualLogic PS6100XS	33
EqualLogic PS4100E	33
EqualLogic PS6510E	33
Five reasons to make the Dell EqualLogic PS Series your virtual infrastructure solution	33

Dell PowerVault & Dell PowerConnect

Network-attached storage	35
Tape backup	35
Entry-level SAN	35
Direct-attached storage	35
Disk backup	35
PowerConnect M6220	37
PowerConnect M8024	37

Dell Compellent

Dell Compellent	38
-----------------	----



PartnerDirect



intel inside™

CORE™ i7

Visibly
Smart

Technology that's
custom-made
for your business
needs

Dell's product range provides solutions for the desktop and mobile workforce as well as servers, storage, networking and services. No matter how big or small your business requirements, Dell has a solution to fit your needs.

Commercial client products

Latitude™ E-Family laptops

The new business class

Designed for networked businesses

Powered by the new 2nd generation Intel® Core i3, Core i5 and Core i7 processors, these new ultra-thin, ultra-light laptops provide the highest level of security, making them efficient to manage and a pleasure to use. One tough family, Latitude E-Family laptops are rigorously tested to survive life in the office or on the road.



OptiPlex™

Business-class desktop

Designed for networked businesses

OptiPlex desktops are designed specifically for networked environments, delivering quick setup time and easy management and troubleshooting features, and they are backed by corporate-class support.

- Stable, reliable, and backed by customisable Dell Services
- Exclusive technologies designed for enterprise-class security
- Energy-efficient – high-efficiency power-supply hardware and energy-saving Dell Client Manager power-scheme software
- Powered by the new 2nd generation Intel Core i3, Core i5 and Core i7 processors



Dell Precision™

Power and performance

Workstations for demanding applications

Precision is the element that separates greatness from everything else. Dell Precision is your key tool, whether your job requires you to design digital content, work with CAD models, analyse manufacturing processes or use any other performance-intensive application. Our workstation-class products offer prodigious productivity, ISV certification, rock-solid dependability and harmonious manageability to maximise your productivity and reliability.






No two
businesses
are alike, so we'll
customise your
service* plan

.....

Your business is unique –
your service and support†
should be as well. Dell goes
beyond one-size-fits-all
support by offering choice
and flexibility that suit all sizes
of business and budget.



Dell ProSupport[†] gives you access to highly-trained technicians in an average of two minutes or less, 24 hours a day, seven days a week.

No matter what particular challenges your business faces, Dell offers a full selection of service options, giving you the flexibility to choose the services that best suit your requirements. Pay only for what you need and enjoy the cost-savings that come with total flexibility. Add and change service selections with ease as your organisation grows and evolves.

Dell services are unique; we designed and built your machines, so who better to trust to keep them running smoothly? With Dell experts available online, by phone and through Dell Live Support Chat, you can count on getting the answers you need.

We're here to help

Remove barriers so you can get back to business with Dell Support Services

- Reliable global team for a single point of accountability, expertise in support delivery and comprehensive planning
- Fast access to resolve incidents in minutes or hours, not days
- Flexible options to address specific scenarios — from users and devices to applications and datacentres
- Efficient resources and empowering tools to get the job done

Why Dell for support?

Count on Dell for proven and consistent support, operational excellence and a single point of accountability

- Customer success
- End-to-end reliable and award-winning support
- Automated tools and analysis
- Efficient global command centres
- Unique intellectual property
- World-class engineering and quality control
- Skilled technical account managers
- Resourceful service delivery managers

[†] Dell ProSupport must be purchased in conjunction with Limited Hardware Warranty.



Configurable support services

that are simple, flexible and reliable

Features	Dell ProSupport	Dell Basic Hardware service
Hardware Technical Support	•	•
Business Hours Support	•	•
Online Parts Ordering	•	
Next Business Day Parts & Onsite Response	•	•
Return for Repair Services	•	•
Software/Collaborative Support*	•	
24x7 Support	•	
Mission-Critical & Same-Day Parts & Onsite Response	•	
Specialised Onsite Options	•	
Asset & Data-Protection Options	•	
Proactive Maintenance & Advisory Service Options	•	
Optimised Support Delivery via Partner/Dell Collaboration*	•	
Remote Support Features with Proactive Systems Management*	•	

Speed of response

Dell ProSupport Mission-Critical

When dealing with mission-critical systems in a networked environment, reducing recovery time from days to hours is a must. Dell ProSupport Mission-Critical is a service option that can reduce downtime by as much as 48%.

Asset management and protection

Dell Asset Protection Services help protect your investment and offer optional battery replacement.

- Dell System Track
- Extended Battery Service
- Accidental Damage Service

Data management and protection

Dell Data Protection Services help protect your valuable and sensitive data in the event of loss, theft or failed hard drive and include recovery, deletion or destruction of data.

- Remote Data Delete
- Certified Data Destruction
- Keep Your Hard Drive

Upgrade and extend

Dell After Point Of Sale (APOS) Service

With Dell APOS Service, you can upgrade and extend your existing service and support contracts, allowing you to deliver high-performance IT systems without straining your budget by regularly refreshing equipment.

Dell has introduced two great new APOS offerings: the EMC® Purple systems and Dell ProSupport Extended Battery Service.

For more information on Dell APOS offerings, please contact your local Dell sales representative or [click here](#).

To learn more, visit:

dell.com/ec-emea/prosupport

Shift resources from maintenance to momentum

Efficient and flexible resolution: choose the speed of response best suited for your users

With Dell APOS Service, you can upgrade and extend your existing service and support contracts, so that you can deliver high-performance IT systems without straining your budget by regularly refreshing equipment.

Escalation management for critical support

Set your own severity levels of incidents and receive a designated point of contact for resolution management, escalation, and status updates. For severity level 1 issues under Mission-Critical service, an onsite technician is dispatched at the same time as phone-based troubleshooting.

Collaborative support

If a system problem is determined to be a third-party-vendor issue, Dell will collaborate with selected hardware and software vendors to resolve the issue until the incident is closed.

Protection for your investment

Safeguard your data and assets with a variety of offers that suit your circumstances.

Proactive options

Help prevent problems before they occur with the right value-added service offers and remote monitoring on selected Dell servers and storage through Proactive Systems Management.

Which options are best for you?

Customise your support experience based on the critical factors that define your IT environment: speed of response, protection and proactive support, or a combination of all three.

Dell ProSupport is designed to support the needs of your specific environment.



PartnerDirect

Introducing the Latitude E-Family

Try Dell Latitude laptops featuring
Intel processor technology.



Dell Recommends Windows® 7

Everything you need from start to finish – without overcomplicating IT

Mobile computing at Dell is about more than just mobile computers. When you buy a Dell solution, your laptops and mobile workstations are surrounded by a comprehensive suite of services that simplify remote management and protect your mobile assets everywhere you go, 24 hours a day. With our mobile computing:

- Guidance is available to support you throughout the solution life cycle, from assessment to migration and asset recovery
- You get services and tools that can simplify and/or automate your remote management tasks
- Round-the-clock data and device protection accompany you wherever you go
- Business, speciality and high-performance laptops designed with customer-inspired features help you stay productive
- All-day battery life allows you to decide when it's time to stop working
- Backlit keyboards enable you to work in low-light environments
- Fingerprint-authentication tools discourage unauthorised access



Latitude laptop family

E-Family Advanced laptops

- 1 E5420 2 E5520

E-Family Premier laptops

- 3 E6220 4 E6320
5 E6420 6 E6520

E-Family Speciality laptops

- 7 E6420 ATG 8 2120

Touchscreen options available

Dell Latitude E6420

- 2nd generation Intel Core i3, Core i5 and Core i7 processors
- 14.0" LVDS with touchscreen option
- 2.06kg

Free-fall sensor available as standard on all Latitude models

Dell Latitude E6320

- 2nd generation Intel Core i3, Core i5 and Core i7 processors
- 13.3" HD WLED
- Scroll zones and multitouch touchpad





PartnerDirect



Freedom from business as usual



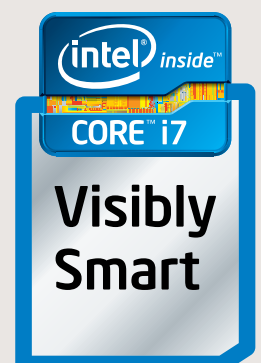
Design the support service that's right for you

Dell's commitment to simplifying IT extends to our new support portfolio. With Dell ProSupport, we offer a single support portfolio that covers your entire environment. Whether you're serving a small business or a global organisation, Dell can help you tailor a solution that fits your customers' needs.

Dell breaks the mould of traditional IT support with Dell ProSupport – a 100% configurable suite of professional support services that can simplify your IT from the desktop to the datacentre.

With Dell ProSupport, you can customise your support services based on who you want supported, how you want them supported and your preferred speed of response. Customise your support even further for specific needs such as asset- and data protection or proactive support.

To learn more, visit dell.com/prosupport



Dell Latitude

Latitude E5420

Intelligent productivity

- Intel Core i3, i5, and i7 processors
- 2.04kg, 1.18"–1.28" x 13.78" x 9.45"
- 3 x USB & 1 x USB/eSATA port
- 14.0" HD+ WLED
- Backlit keyboard option
- Aluminium LCD back cover
- ExpressCard® 54, SD/MMC, RJ-45, single mic/audio, HDMI, VGA

Latitude E6320

Ultra-thin & mobile 13" laptop

- 2nd-generation Intel Core i3, Core i5 and Core i7 processors
- DDR3 1333MHz up to 8GB
- AMT 7.1 (Intel vPro™)
- 3-/6-cell, three-year warranty, battery and E-slice
- ExpressCard 34, SD/MMC, RJ-45, 2 x USB, 1 x eSATA/USB, single mic/audio, mini-HDMI, VGA
- 1.61kg and 1.1"–1.2" x 13.2" x 8.8"

Latitude E6520

Take-anywhere performance

- 2nd-generation Intel Core and Core i7 processors
- 2.56kg, 1.08–1.31" x 14.72" x 10.18"
- 4 x USB & 1 x eSATA/USB port
- 15.6" HD with touchscreen option
- Backlit keyboard option
- Express Card 54, SD/MMC, RJ-45, single mic/audio, HDMI, VGA

Latitude E5520

Business-class control

- Intel Core i3, i5, and i7 processors
- 2.33kg, 1.19"–1.31" x 15.28" x 9.88"
- 3 x USB & 1 x USB/eSATA port
- 15.6" FHD WLED
- Backlit keyboard option
- Aluminium LCD back cover
- ExpressCard 54, SD/MMC, RJ-45, single mic/audio, HDMI, VGA

Latitude E6420

Durable, secure and convenient

- 2nd-generation Intel Core i3, Core i5 and Core i7 processors
- DDR3 1333MHz up to 8GB
- AMT 7.1
- 3.0Ahr 9-cell/battery slice
- 14.0 LVDS (1366x768) with touchscreen option
- HDMI
- 2.06kg and 1.0"–1.22" x 13.18" x 9.38"

Latitude 2120 netbook

Combining form and function

- Intel Core i5-540M Processor (2.53GHz, 3MB cache)
- Genuine Windows 7 professional
- 4GB DDR3 SDRAM
- 160GB free-fall-sensing hard drive
- Intel HD graphics with dynamic frequency
- Backlit keyboard
- Three-year Limited Hardware Warranty*

* Not available in all regions. Please contact your Dell Account Manager for more information.

Latitude E6220

Power on the move

- Intel Core i3, i5, and i7 processors
- 1.42kg, 0.97" x 12.2" x 8.8"
- Sleek and stylish design
- 2 x USB & 1 x eSATA/USB port
- 12.5" HD WLED
- Backlit keyboard
- ExpressCard 34, SD/MMC, RJ-45, single mic/audio, HDMI, VGA

Latitude E6420 ATG

Dependable full-featured business-rugged laptop

- 2nd-generation Intel Core i3, Core i5 and Core i7 processors
- DDR3 1333MHz up to 8GB
- AMT 7.1
- 3.0Ahr 9-cell/battery slice
- 14.0" LVDS with touchscreen option
- 2.06kg and 1.0"–1.22" x 13.18" x 9.38"

Latitude XT3

The flexibility of a tablet with the power of a laptop

- Intel Core i3, i5 and i7 processors
- 13.3" auto-bright HD display and backlit keyboard option
- Integrates with Latitude E-Family docking stations
- ExpressCharge™ for 80% recharge in an hour
- Optional 9-cell extended battery and slice option for all-day power

* Only available in the following countries: Greece, Israel, Kuwait, Morocco, Nigeria, Portugal, Russia, Saudi Arabia, South Africa, Turkey and United Arab Emirates.

Latitude ST slate

Built for business, designed for pleasure

- Intel® Atom® Z670 1.5GHz processor
- 2GB DDR2 SDRAM
- Up to 128GB SSD storage
- 10.1" WXGA LED display with Corning® Gorilla® glass
- Gesture-enabled, multi-touch and N-Trig® stylus input
- 720p front/5.0MP back cameras
- Up to 7 hours of battery life
- Starting at 0.816kg
- WLAN and Bluetooth® 4.0 combo card

* Only available in the following countries: Greece, Portugal, Israel, Turkey, Russia, KSA, UAE, Kuwait, Morocco, Nigeria and South Africa.



• Microsoft® Windows 7 Professional

• Safer, quicker and more reliable

• Whichever Latitude model you decide on, Windows 7 Professional makes computing tasks easier, quicker and more secure. The ReadyBoost® feature improves performance, and faster startup, shutdown, sleep and resume minimise downtime. Joining networks is made simple with Domain Join and business data is kept secure with BitLocker® encryption.

• Dell recommends Windows 7

Work
anywhere
easier.


Windows 7
Professional



PartnerDirect

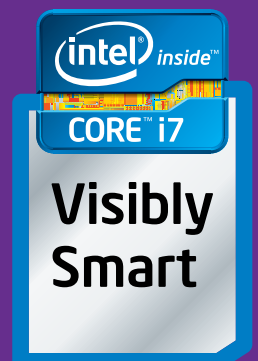


OptiPlex serious business

OptiPlex 990 desktop

2nd generation Intel Core i3, i5, and i7 processors

- Intel Q67 Express chipset
- Up to four DIMM slots; non-ECC dual-channel 1333MHz DDR3 SDRAM, up to 16GB
- Blu-ray™ writer drive; DVD+/-RW; DVD-ROM; Dell 19-in-1 media-card reader (mini-tower and desktop only)



Intel, the Intel Logo, Intel Inside, Intel Core, and Core Inside are trademarks of Intel Corporation in the U.S. and/or other countries.

Whether yours is a growing business or a large-scale global enterprise, Dell OptiPlex desktops help you control costs and manage resources throughout the IT life cycle.

The premier OptiPlex 990 is Dell's most powerful and flexible desktop solution, designed for best-in-class performance and collaboration while enabling business-class control. It delivers premier technology that helps simplify systems management and security and is available in four different chassis sizes that blend seamlessly into office environments and respect our planet.

OptiPlex

- Works for your workforce: custom configurations, flexible form factors and energy-conscious power options let you choose OptiPlex desktops with exactly the features your organisation needs
- Empowers IT: flexible hardware, easily serviced chassis and a variety of management and deployment options give your organisation the power to empower IT throughout the product life cycle
- Builds a foundation for success: from long life cycles and managed transitions to outstanding service and support, OptiPlex desktops have been designed to fit your evolving energy-efficiency, security and manageability needs

Space-saver

The mini-tower, desktop and small-form-factor chassis have been optimised to help maximise desk space and ensure the systems integrate seamlessly into virtually any office environment.

Ready for your network

Up to eight USB ports on selected systems, VGA and legacy ports provide hassle-free integration with your existing IT infrastructure.

OptiPlex 790

The new OptiPlex 790 delivers strong office productivity with flexible remote control

- Available in mini-tower, desktop, small form factor and ultra-small form factor
- 2nd Gen Intel Core Processors technology
- TPM 1.2 chip and encrypted hard-drive options
- Dell data protection and access
- Optional 1GB ATI Radeon™ HD 6430
- Dual-channel DDR3 1333MHz, four DIMMs, up to 16GB
- Up to 90% efficient, wide-ranging APFC optional power supplies





Work
anywhere
easier.



Windows 7
Professional

OptiPlex 390 mini-tower

A competitive desktop solution designed for in-band system management

- Choice of Intel Processors: 2nd generation Core i3 and i5, Pentium® and Celeron®
- Operating system options include genuine Windows 7 home basic and Windows 7 Professional
- Up to 8GB dual-channel 1333MHz DDR3 SDRAM memory
- Up to 1TB 7200rpm SATA 3Gbps
- Three different chassis sizes: mini-tower, desktop and small form factor (SFF)



*Availability of services varies depending on country. Please check with your local Dell representative.



PartnerDirect

Create, edit, animate, analyse: **Dell Precision workstations**



Dell Precision models are Dell's highest-performing and most scalable systems, specifically designed for graphics-intensive professionals in engineering, product design, animation and digital imaging.

Peace of mind through ISV application certification

As the world's leading workstation vendor, Dell partners with strategic independent software vendors to certify system and application compatibility so that your applications can run gracefully on Dell Precision models.

Highlight your creativity

When you need super-fast processing power, phenomenal application performance and breathtaking graphic realism to bring your creativity to life, you'll be glad you chose Dell Precision.

Extreme power

Intel Xeon processor technology delivers outstanding performance.

Speed and stability

Available with Intel Xeon® quad-core processors and up to 192GB memory for jaw-dropping performance.

Well-connected

Connect to your peripherals on the go with an IEEE 1394 port and four USB ports.

Breadth and depth

Dell Precision desktops provide a broad range of processing power, and a wealth of options in graphics, storage, connectivity and more.



Dell Precision T1600

Performance and peace of mind with exceptional value

- Intel Xeon processor
- Genuine Windows 7 Professional
- Four DIMM slots; up to 8GB 1333MHz non-ECC memory; up to 16GB 1333MHz ECC memory
- Up to two 3.5" SATA drives: 250GB, 500GB, 1TB, 2TB; or up to four 2.5" SATA drives: 320GB, 500GB
- Compatible with performance flat-panel displays, Dell UltraSharp™ widescreen and standard flat-panel displays from 17" to 30" viewable; analogue flat-panel displays also available
- DVD-ROM; DVD-RW; Blu-ray; optional media-card reader (installed in external 3.5" bay)

Dell Precision T3500

Balanced performance scalability and affordability

- Intel quad-core processor
- Genuine Windows 7 Professional
- Up to 24GB 1066MHz or 1333MHz ECC and non-ECC memory

Workstation-class OpenGL® graphics and ISV certifications

Dell Precision T5500

Impressive power to fit space constraints

- Intel dual- and quad-core performance
- Genuine Windows 7 Professional
- Three-channel DDR3 ECC memory at 1066 and 1333MHz
- Dual NATIVE gen 2 PCI-e x16 graphics slots and support for up to 300 watts (2 x 150W or single 225W)
- Integrated SATA 3.0Gbps host controller (part of the Intel chipset)
- Optional PCI-e SAS 6/ir controller supports SAS drives with host-based RAID 0 or 1
- Great for customers looking for memory and OpenGL 3D graphics scalability in a compact chassis

Dell Precision T7500

Flagship with breakthrough performance

- Up to two 64-bit quad-core Intel Xeon processor
- Genuine Windows 7 Professional
- Up to 192GB 1333MHz or 1066MHz DDR3 ECC memory
- Dual NATIVE gen 2 PCI-e x16 graphics slots and support for up to 450 watts (2 x 225W or single 300W)
- Optional NVIDIA® Tesla™ C1060 GPU card can be added, creating a "personal supercomputer" for CUDA™-enabled applications
- Integrated LSI 1068e SAS/SATA 3.0Gbps controller supports host-based RAID 0 or 1; other drive controller options support further configurations

Dell
recommends

Design the support service that's right for you

Dell's commitment to simplifying IT extends to our new support portfolio. With Dell ProSupport, we offer a single support portfolio that covers your entire environment. Whether you're serving a small business or a global organisation, Dell can help you tailor a solution that fits your customers' needs.

Dell breaks the mould of traditional IT support with Dell ProSupport – a 100% configurable suite of professional support services that can simplify your IT from the desktop to the datacentre.

With Dell ProSupport, you can customise your support services based on who you want supported, how you want them supported and your preferred speed of response. Customise your support even further for specific needs such as asset- and data protection or proactive support.

To learn more, visit dell.com/prosupport



PartnerDirect

Creativity and performance on the move: **Dell Precision mobile workstation**

.....



Everything you need to bring ideas to life

The world's leading power-intensive applications are certified to run brilliantly on hardware that's built to deliver.

Power and versatility

Intel Xeon Core processors multi-task seamlessly and ramp up when needed – just like you do.

Impressive scalability

With Dell Precision workstations, you can turbo-charge the turbo-charger. These already-powerful machines can scale up to even bigger, even faster memory.

Base-to-field adaptability

The Dell Precision R5500 sits on a rack at the back – but its power and performance reach out to users on the move.

Outstanding human-computer interface

Dazzling graphics with bright, accurate colour reproduction, backlit displays, multitouch options – they're all here.



Dell Precision M4600

Unparalleled performance: meet the most powerful mobile workstation. Replacing the M4500 model, features include:

- 15.6" LED backlit display
- Optional touchscreen capabilities
- Powerful 2nd Gen Intel Core Processors with options up to 2nd generation Intel Core i7 processor Extreme Edition
- Impressive AMD or NVIDIA discrete graphics with up to 2GB of dedicated memory
- Expansive DDR3 memory with four DIMM slots for up to 32GB of 1333MHz memory or up to 16GB of 1600MHz memory for blistering performance
- ISV certification

Dell Precision M6600

Workstation performance, desktop value

- Powerful 2nd Gen Intel Core Processors with options up to 2nd generation Intel Core i7 processor Extreme Edition
- Impressive AMD or NVIDIA discrete graphics with up to 2GB of dedicated memory
- Expansive DDR3 memory with four DIMM slots for up to 32GB of 1333MHz memory or up to 16GB of 1600MHz memory for blistering performance
- Astonishing 17.3" display options provide accurate colour reproduction and brilliant clarity for bright, crisp images
- ISV certification to ensure established software reliability for demanding applications
- Optional multi-touch display with touch-enabling software

Dell Precision R5500

Rack-mounted remote workstation performance

- Up to 130W, quad-core or six-core, one or two Intel Xeon 5600 series processors
- A phenomenal 192GB of 1066MHz or 1333MHz ECC memory in 12 DIMM slots
- Using the FX100 Remote Access Device provides remote 1:1 access to the Dell Precision R5500 from virtually anywhere
- Top-level performance with optional dual graphics cards or dual GPGPU cards and up to 450W of available graphics power
- Superb flexibility with options for up to five standard, full-length, full-height PCI-e x16 cards
- Up to five SATA drives and up to six SAS drives to provide ample storage capacity for large projects
- ISV certification
- A robust and flexible platform for High-Performance Compute Clusters (HPCC)



Design the support service that's right for you

Dell's commitment to simplifying IT extends to our new support portfolio. With Dell ProSupport, we offer a single support portfolio that covers your entire environment. Whether you're serving a small business or a global organisation, Dell can help you tailor a solution that fits your customers' needs.

Dell breaks the mould of traditional IT support with Dell ProSupport – a 100% configurable suite of professional support services that can simplify your IT from the desktop to the datacentre.

With Dell ProSupport, you can customise your support services based on who you want supported, how you want them supported and your preferred speed of response. Customise your support even further for specific needs such as asset- and data protection or proactive support.

To learn more, visit dell.com/prosupport



PartnerDirect

Secure, scalable and easy to manage: **PowerEdge™ servers**

Designed for performance- intensive applications

Dell makes it easy to find the perfect tower, rack or blade servers. We started with a clean sheet to create a versatile server portfolio with increased memory capacity and I/O rates for intense applications in demanding environments.

Manageable, scalable and flexible

Our PowerEdge server portfolio offers a range of options with easy configuration, powerful open-standards systems management, scalable storage and flexible services.

Purpose-built for reliability, efficiency and performance, the new Intel-processor-based PowerEdge M610x, M710HD blade servers and AMD-processor-based PowerEdge R715 rack server are the foundation of a reliable and efficient infrastructure.

The Intel Xeon processor 5600 series

The next generation of intelligent server processors — automatically regulates power consumption to combine industry leading energy efficiency with intelligent performance that adapts to your workload.



Dell PowerEdge



1 PowerEdge M610X

Maximised PCI Express® 2.0 expansion is finally realised within a blade

The PowerEdge M610x full-height two-socket blade server couples all the capabilities of the M610 blade with an expansion module containing x16 PCI Express (PCI-e) 2.0 expansion slots that can support up to two standard full-length/full-height PCI-e cards.

2 PowerEdge M710HD

Two-socket, half-height, memory-dense, enterprise-class server

Designed for enterprise database and virtualisation deployments, the PowerEdge M710HD features tremendous I/O (input/output) throughput, maximised memory density and robust processing power in a half-height two-socket blade server with hot-swap serial-attached SCSI (SAS) or solid-state drive (SSD) hard drives.

PowerEdge T110II

Reliable and secure

The PowerEdge T110ii is an ideal first server for small business, delivering the right combination of security and reliability at an attractive desktop price-point in a mini-desktop-sized tower form.

PowerEdge T710

High-performance and virtualisation-ready

Customer-inspired usability with excellent system- and image commonality, the PowerEdge T710 features a clean, logical layout of components and power-supply placement for quick installation and simplified deployment.



PowerEdge R210 II

The PowerEdge R210 II is an ultra-compact single-socket rack server offering great value for deployment in almost any environment, from a small business to a high-density scale-out. It can run business applications that facilitate data coordination and sharing, and offers data protection, management and scalability to support business growth. It offers a choice of processors in the Intel Xeon processor E3-1200 product family, the Intel Core i3-2100 product family, and dual-core Pentium or Celeron processors, as well as four DIMM slots and up to 6TB of internal storage.



PowerEdge R510

The PowerEdge™ R510 is a multi-purpose 2-socket 2U high-capacity rack server. It offers the latest Intel® Xeon® quad-core or six-core (5500 and 5600 series) processors and enterprise-class manageability, and provides an excellent balance of internal storage, redundancy, and value. With 4, 8, or 12 hard drive chassis options, the internal storage capacity range is 12TB–37.8TB. The PowerEdge R510 is perfect for customers needing significant internal storage capacity and/or seeking a multi-purpose core application server.

Microsoft Windows Server® 2008 R2

Building on the award-winning foundation of Windows Server 2008, this new edition expands on existing technology and includes new features that improve reliability and increase the flexibility of your server infrastructures. New virtualisation tools, web resources, management enhancements and exciting Windows 7 integration help save time, reduce costs and provide a platform for a dynamic and efficiently-managed datacentre.

Find out more at www.microsoft.com/windowsserver2008



Windows Server® 2008 R2



PartnerDirect



Windows Server[®] 2008 R2

Meet the world's first servers with instant-on management

Dell PowerEdge servers are re-engineered to include the world's first embedded systems-management features for instant-on management and quick, media-less, one-button configuration. These built-in features also allow for automated updates, patch management and reliable system diagnostics.

The single-view Dell Management Console helps to eliminate manual processes so you can allocate energy more efficiently, especially your own. You can actually reduce tasks with faster provisioning and streamlined updates. Your time is once again controlled by you.

- Embedded management features simplify configuration to one button with no media required
- Dramatically reduced power consumption helps you run your datacentre more efficiently
- For the most rapid response times to further reduce downtime, choose Dell ProSupport for IT with Mission-Critical Speed of Response





PowerEdge R815

Great value, great performance – in a great form factor

- Four-socket rack server with up to 64 processor cores
- Robust hard-drive carriers and organised cabling
- Interactive LCD screen, dual SD hypervisor modules and embedded diagnostics
- Outstanding balance of advanced manageability, memory scalability, I/O and redundancy in a space-saving 2U form factor
- Ideal for virtualisation, medium-sized databases, high-performance computing and more



Four-socket PowerEdge server platforms

PowerEdge M915

Maximised performance and bandwidth for mission-critical tasks

- Four-socket full-height blade server for applications needing maximum I/O scalability and performance
- Input, process, analyse and report data on the same platform
- Consolidate servers and scale during peak workloads
- Using up to six dual-port 10GbE network cards delivers total aggregate throughput into a single server up to 120Gbps



PowerEdge C6145

High-performing 2U server – fast responses to big challenges

- Up to 64 cores, up to 1TB memory and up to 40Gbps I/O per card
- Three PCIe x16 Gen 2 slots, one x8 mezz slot and a dedicated host interface card (HIC) slot per server
- The only server in its class with two four-socket AMD Opteron 6200 processor-based servers in 2U
- Combines with the PowerEdge C410x PCIe expansion chassis to double server-to-GPU ratios
- High density enables customers to design an economical datacentre without sacrificing performance

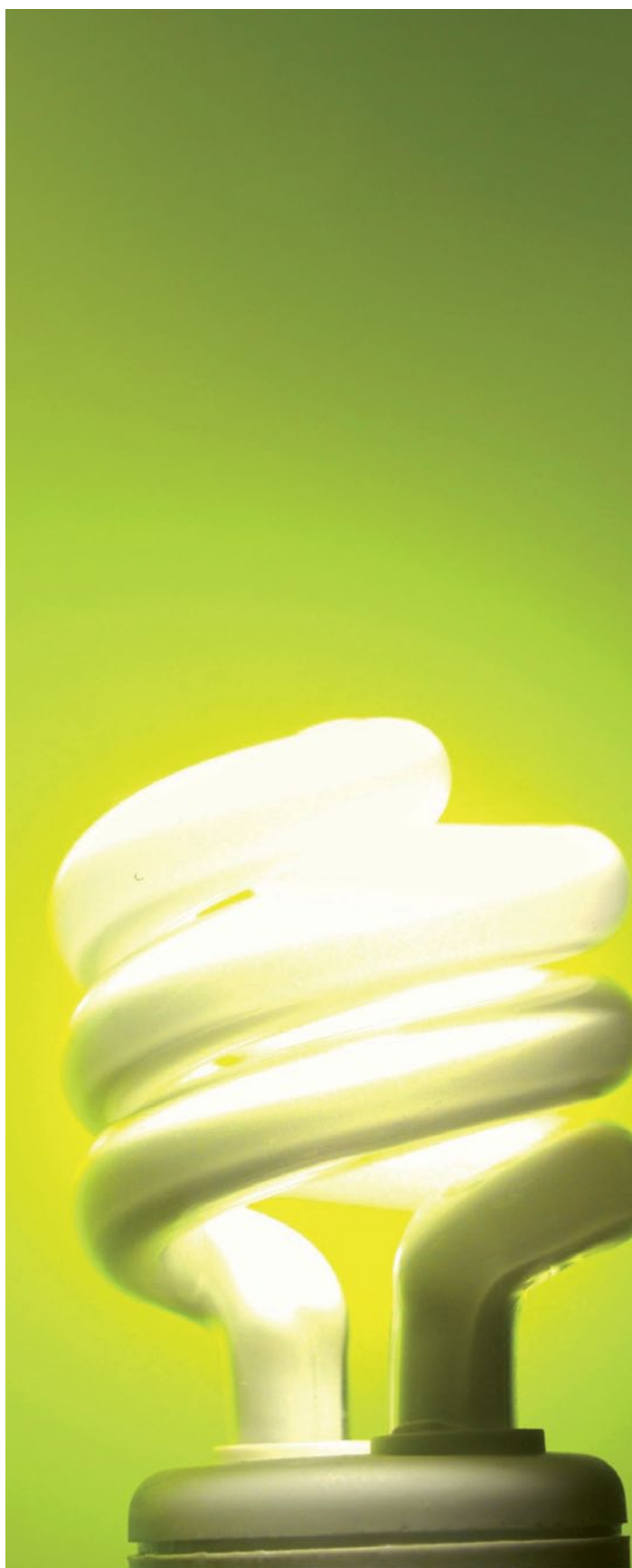
There's never been a better time to virtualise

.....

Maximise your ROI. Your customers invest heavily in IT infrastructure and the manpower, building space and energy it takes to run their datacentre and business. But are they really getting the maximum return on investment in IT? Without a proven, expertly-implemented virtualisation strategy, chances are, they're not.

Virtualisation offers a better way to maximise the value of IT infrastructure and resources. It can help customers achieve the near-impossible task of keeping up with demands for additional IT capacity while driving down the costs of delivering business applications. And with organisations everywhere facing pressure to cut costs, conserve energy and be green, there's never been a better time for your customers to virtualise.

Dell offers a proven approach to virtualisation. Our servers and storage solutions are virtualisation-optimised, and Dell Consulting Services can help organisations assess, pilot and roll out your project. Dell will make sure your customer virtualisation project helps customers meet business objectives.



Windows Server[®] 2008 R2



PowerEdge 2420, PowerEdge 4220 and PowerEdge 4820

Exceptional performance

Great for addressing critical power, cooling and cabling issues with intelligent and practical design features.

Exceedingly strong and secure

The PowerEdge rack enclosures need no special infrastructure for many installations, due to excellent static load ratings. Lockable doors at the front and rear provide security in a wide range of environments.

Important new PDU mounting features

In addition to U-space power distribution unit (PDU) mounting, the PowerEdge rack enclosures allow 0U PDUs to be snapped in on either side or at the back along the doors – no tools necessary.

Made to stay cool

Flexible air dams help keep hot air from moving from the back to the front, a problem common in many racks.

For hot-aisle/cold-aisle thermally-efficient datacentre topologies, the rack's footprint matches standard two-foot floor-tile placement to optimise access to cold air.

A bundle of cable-management options

Removable tail-bars at the top and bottom of the back frame eliminate a common obstacle to power and cable routing. The bars can be reattached after the cables are in place.



Dell UPS

Easier selection, deployment, monitoring

Servers, telecommunications, storage arrays and any other devices can be configured together to give you a solution that will protect all your equipment.

Visit www.dellups.com to find your Dell UPS solution.

Dell is #1 in server customer satisfaction

Windows Server 2008

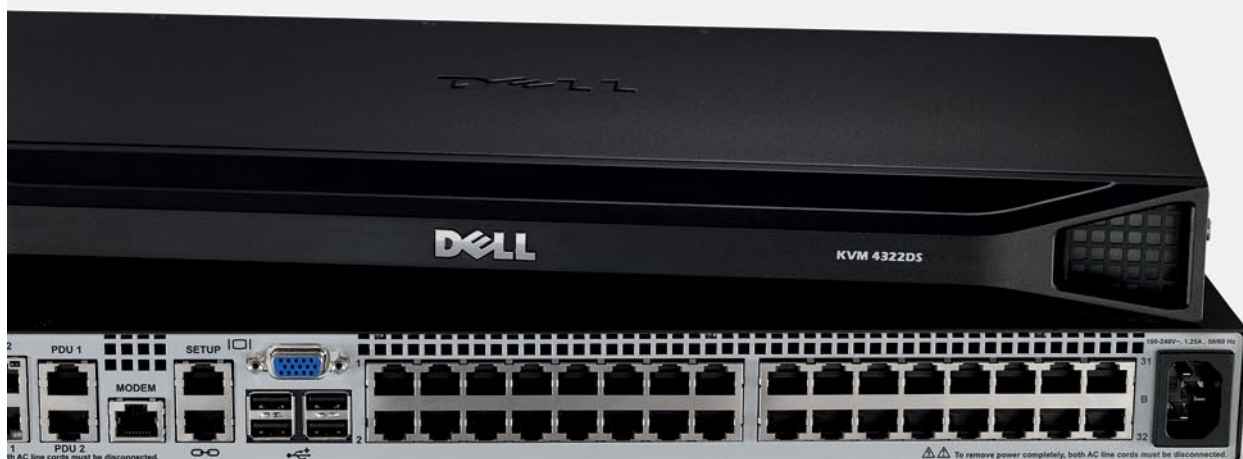
Top five reasons to install Microsoft Windows Server 2008:

- 1 Streamline server virtualisation
- 2 Ease branch-office oversight
- 3 Help improve networking performance
- 4 Have full Windows 7 compatibility
- 5 Strengthen IT security and compliance

Source: TBR 1Q09 Corporate Customer Satisfaction Study: x86 Servers



Windows Server® 2008 R2



Dell KVM 4322DS

Thirty-two-port remote console switch with two local users, four remote users and dual power-supply units. Features include:

- Intel Xeon processor
- Two power-supply units
- Virtual media support
- Common Access Card (CAC) support with encryption
- True serial support via Telnet/SSH
- 16:10 and 4:3 video display with configurable resolution
- Tool-less installation with Dell ReadyRails™ mounting interface



Dell KVM 1082DS

Eight-port remote console switch with two local users and one remote user. Features include:

- One power-supply unit
- Virtual media support
- Common Access Card (CAC) support with encryption
- True serial support via Telnet/SSH
- 16:10 and 4:3 video display with configurable resolution
- Tool-less installation with Dell ReadyRails mounting interface



Dell KVM 2162DS

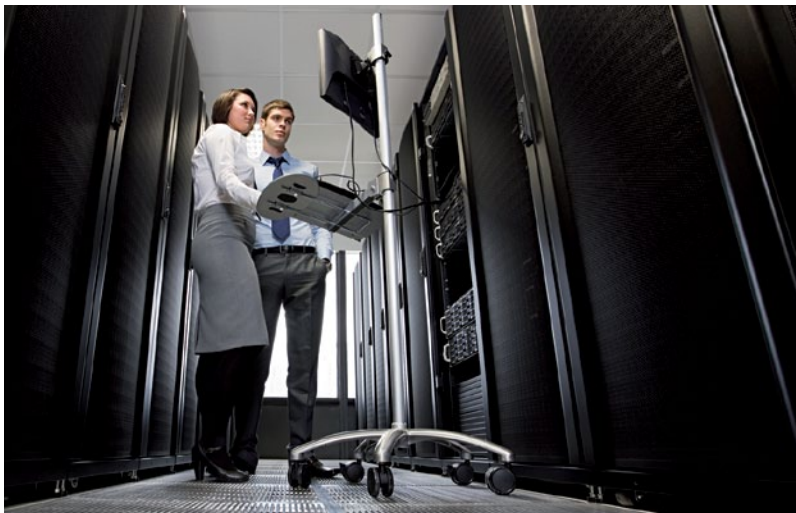
Sixteen-port remote console switch with two local users, two remote users and dual power-supply units. Features include:

- Two power-supply units
- Virtual media support
- Common Access Card (CAC) support with encryption
- True serial support via Telnet/SSH
- 16:10 and 4:3 video display with configurable resolution
- Tool-less installation with Dell ReadyRails mounting interface





Dell blade solutions



What makes Dell server solutions so reliable?

.....

Server downtime is expensive for any organisation, and the costs of an outage are only compounded when your staff has to spend time dealing with problems that could have been avoided. The fact is, organisations can't afford unplanned downtime in today's climate. And they shouldn't have to.

To protect your business from server outages, your IT infrastructure needs to deliver rock-solid reliability around the clock. This requires tried-and-tested hardware solutions and advanced monitoring and management capabilities. And it takes enterprise-grade services to keep your infrastructure running optimally and deal with outages quickly if they do occur.

Dell offers a reliability value chain that starts long before your purchase and keeps your infrastructure running like clockwork throughout its service life. From exhaustive product testing and rigorous quality assurance to our health checks, readiness assessments and tailored ProSupport agreements, we make sure you can always rely on your IT infrastructure.

Dell differentiation with breakthrough innovations

More memory per processor

FlexMem Bridge provides extended memory scalability while populating only a subset of processor sockets. The end result is that customers can receive expanded memory capacity without paying a premium price.

Fail-safe virtualisation

Dell has taken an extra step to offer dual embedded hypervisors to give your customers the added security of a redundant hypervisor. This feature gives them peace of mind as they expand and increase the number of virtual machines running on an individual server.

Faster deployment

Lifecycle Controller gives IT administrators a single-console view of their entire IT infrastructure while performing a comprehensive set of provisioning functions including system deployment, system updates, hardware configuration and diagnostics.



Because business is complicated, you need a server that isn't



Windows Server[®] 2008 R2



Xeon[®]

Powerful.
Intelligent.

Introducing the Dell PowerEdge server solution with Intel Xeon processor

one button to configure,
one screen to manage,
one choice to make

Our PowerEdge server portfolio offers a range of options with easy configuration, powerful open-standards systems management, scalable storage and flexible services.

Dell blade servers

Dedicated website to explore Dell M-Series blade technology from high level to deep dive:
www.dell.com/ec-emea/blades





EqualLogic™:

get bigger,
stay simple,
lose nothing

.....



Consolidate with SAN solutions

Consolidate with SAN solutions

The Dell EqualLogic PS Series of iSCSI storage arrays offers high performance, reliability, intelligent automation and seamless virtualisation.

EqualLogic PS6100XS

The Dell EqualLogic PS6100XS storage array delivers up to 67% IOPS improvements on typical workloads over previous-generation EqualLogic arrays. Incorporating Fluid Data™ technology, it expands seamlessly and is simple to manage.

EqualLogic PS4100E

The EqualLogic PS4100E storage array is designed to provide exceptional capacity with up to 36TB of Near-Line SAS storage in a 2U/3.5" drive solution.

EqualLogic PS6510E

The EqualLogic PS6510E is a virtualised iSCSI SAN that combines intelligence and automation with fault tolerance to provide simplified administration, rapid deployment, enterprise performance and reliability. The PS6510E delivers low cost-per-gigabyte with up to 144TB of SATA storage in a high-density 4U chassis.

FIVE reasons

to make the Dell EqualLogic PS Series your virtual infrastructure solution

Affordable enterprise-class networked storage

Dell EqualLogic PS Series solutions are built for enterprise deployment, providing 99.999% availability through a fully redundant, hot-pluggable system architecture. Volumes are RAID-protected, and through advanced system and disk monitoring, faults can

be quickly recognised and addressed without downtime. Each array includes a robust set of data-protection tools including snapshots, clones, replication and online migration, all bundled into the system at no additional cost.

Virtualised storage that automatically optimises resource utilisation

Dell EqualLogic iSCSI SANs virtualise the entire SAN to simplify management and optimise utilisation of all storage resources. Data volumes are automatically provisioned from a single virtual pool of storage that leverages all storage resources within the SAN.

Even as workload demands shift or migrate between virtual machines and their physical host servers, the PS Series's virtualised SAN automatically applies storage resources when and where they are needed without intervention or manual tuning.

Cost-effective data protection and disaster recovery for virtualised data sets

Dell EqualLogic PS Series snapshots are space-efficient and simple to implement, and provide fast online recovery of data sets from any of numerous restore points. The bundled Auto-Snapshot Manager coordinates with Windows-based applications to create clean, consistent backup copies, which are instantly recoverable online and suitable for tape-based backup.

PS Series-based replication simply integrates into virtual infrastructures, providing a simple disaster-recovery strategy that can be effectively tested, deployed and maintained. The PS Series' Auto-Replication capability, standard in each array, provides point-in-time periodic replication to multiple remote sites over any distance using standard IP LAN and WAN networking assets.

Simple deployment, provisioning and ongoing management

Dell EqualLogic PS Series arrays are simple to deploy, manage and grow, simplifying virtual-infrastructure deployments and ongoing management. Systems go from box to operating SAN in minutes, with an intuitive, wizard-based GUI to integrate easily into the Ethernet backbone of the virtual infrastructure. iSCSI connectivity leverages the IP networking skills of your existing IT staff, eliminating the need for special training. In addition, through the PS Group Manager – a centralised graphical management interface – volumes are quickly provisioned and securely accessible by all servers within the virtual infrastructure.

Flexible, scalable virtual infrastructure

Dell EqualLogic iSCSI SANs complement virtual server environments with advanced features that reduce complexity, increase flexibility and minimise application downtime due to infrastructure changes. Capacity and performance of the virtual SAN are easily expanded, seamlessly and without disruption. Workloads from across all virtual servers are automatically load-balanced, efficiently using all available storage resources. Non-disruptive online migration of data volumes among storage tiers and pools allows physical storage resources to be reallocated to meet changing business needs or to be specifically dedicated.



PartnerDirect

Protect your most valuable asset: **your data**

.....

Keep everything in its place

Is your data securely organised, stored and backed up? Lost or misplaced data can result in lost productivity and increased expense for businesses of any size. Consolidating your data into one centralised place makes it easier to manage, easier to access and easy to share. That's where Dell can help.

From removable disks and efficient tape backup to networked storage devices, call Dell's expert storage consultants for advice on creating a powerful solution to protect your data.



Network-attached storage

PowerVault™ NX3500

Efficient performance

High-density file-sharing. The Dell PowerVault NX3500 is a high-density 2U Windows-based rack-mounted network-attached storage solution optimised for advanced file- and print-sharing.



Tape backup

PowerVault 114T/114X

Easy to use, affordable tape-based data-protection solution housed in a 2U rack-mount chassis.

PowerVault 124T tape autoloader

Cost-effective solution for long-term archiving.

Entry-level SAN

PowerVault MD3600i and MD3620i

Designed for flexibility, the MD3600i arrays support a range of drive types, enclosures, and RAID levels all within a single array. The PowerVault MD3600i is a 12-HDD 3.5" enclosure, and the MD3620i provides a 24-HDD 2.5" enclosure. These arrays provide twice the host support of the 1GB iSCSI product, the PV MD32X0i.



PowerVault MD3200i and MD3220i

Storage consolidation is within reach with an Ethernet-based network storage device delivering superior performance and flexibility with an intuitive management interface.

Dell PowerVault MD3600f and MD3620f

The perfect introduction of 8Gbps Fibre Channel in the MD series of arrays. The SAN solution is ideal for entry-level storage consolidation that requires high availability, high performance and business continuity without sacrificing ease of use and reliability.

Designed for flexibility, the MD3600f arrays support a range of drive types, enclosures and RAID levels, all within a single array.



Direct-attached storage

PowerVault MD3200 and MD3220

Share storage across highly-available servers with an SAS array that maximises performance and capacity while delivering a new level of deployment flexibility to optimise your resources.



Disk backup

PowerVault DL2200

Powered by CommVault®

- An integrated hardware, software and services solution that can simplify the backup process while lowering your total cost of ownership
- Reduce storage by up to 95% with data deduplication compared to the same amount of tape. This in turn can reduce backup windows, decrease restore times and save money

PowerVault DL2200

Powered by Symantec™ Backup Exec™ 2010

- Integrated backup-to-disk appliance enables you to start protecting your critical data in less than 20 minutes
- Continuous data protection for Exchange, file and SQL
- Solution with deduplication option designed to be up to 50% less expensive than similar tape solutions



PartnerDirect



PowerConnect™ M6220

Advanced Layer 3 stackable switch

- A modular design that packages a high-performance 24-port stackable Ethernet switch with modular bays
- Bays can be populated with 10GbE or stacking modules to provide customers with the ability to stack multiple switches together, thereby creating a single logical switch that can be managed and configured easily
- Stacking capability is especially powerful when combined with the ability to uplink to the Ethernet core via high-bandwidth 10GbE connections



PowerConnect M8024-k

10Gb flexible modularity for PowerEdge M1000e enclosures

- Industry-leading 24-port design features 16 internal server ports, up to eight external ports via up to two FlexIO 10Gb uplink modules
- FlexIO fully modular design enables connectivity choices including SFP+, CX4 and 10GBase-T modules
- Allows mixing of modules



PowerConnect – add a managed switch to your server to connect your network

PowerConnect 8000 series

Managed routing 10GbE switches

- High-performance 10Gb Layer 3 connectivity to high-speed network backbones, servers or network aggregation in small to medium datacentres
- IT environments requiring cost-effective networking products designed to optimise datacentre infrastructure and maximise return on investment

PowerConnect 3500P and 6200P series

Power-over-Ethernet

- 100MB and 1GB PoE
- Solutions for your Voice-over-IP phones and security cameras

PowerConnect 5400P and 6200 series

Managed switches

- Gigabit Ethernet ports
- High-performance switching and routing



Dell's commitment to simplifying IT extends to our new support portfolio. With Dell ProSupport, we offer a single support portfolio that covers your entire environment. Whether you're serving a small business or a global organisation, Dell can help you tailor a solution that fits your customers' needs.

Dell breaks the mould of traditional IT support with Dell ProSupport – a 100% configurable suite of professional support services that can simplify your IT from the desktop to the datacentre.

With Dell ProSupport, you can customise your support services based on who you want supported, how you want them supported and your preferred speed of response. Customise your support even further for specific needs such as asset- and data protection or proactive support.

To learn more, visit
dell.com/prosupport



PartnerDirect

Dell Compellent™ network storage solutions

.....



Enterprise storage with the future built-in

Fluid Data™ architecture and storage virtualisation address many of the challenges universal to IT departments. Data is actively, intelligently managed at the most granular level, significantly cutting datacentre costs, administration time

and risk for enterprises of all sizes. From healthcare to finance and from government to education, Compellent provides flexible data-management and network-storage solutions that readily adapt to changing business needs.

Fluid Data storage: driving flexibility in the datacentre

Today's dynamic business landscape is no place for complex, inefficient storage systems with dead-end growth paths. The demand for data continues to explode, and ready access to that data is more critical than ever. Yet most enterprise storage solutions fall short, underutilising datacentre resources, wasting IT staff time and leaving you at risk of unnecessary downtime.

With Dell Compellent, enterprise data is actively, intelligently managed throughout its lifecycle so you can constantly adapt to changing business conditions. Together, a Fluid Data architecture, storage virtualisation, intelligent software and modular hardware bring unprecedented efficiency, simplicity and security to enterprise storage. Datacentre resources are utilised to their full potential.

Built-in intelligence and automation ensure data is available when and where it's needed. And an open, persistent hardware platform scales in line with business needs to protect storage investments over the long term.

Dell Compellent Storage Center: enterprise storage for virtualised datacentres

Dell Compellent Storage Center SAN is an all-in-one storage array that allows organisations to actively manage data at a highly granular level using built-in intelligence and automation. With its Fluid Data architecture, Storage Center always puts data in the right place at the right time for the right cost.

This ultra-efficient, easy-to-manage storage solution optimises drive utilisation, dynamically moves data between storage tiers and RAID levels, continuously protects data against downtime and disaster, scales on demand, and quickly adapts to ever-changing business needs. Storage Center enables organisations to cut the time, cost and risk of managing enterprise storage – today and in the future.

Dell Compellent automated tiered storage enables rapid data growth while controlling costs

Unlike the many newcomers to the storage-tiering market, Dell Compellent engineered its Fluid Data architecture from the ground up to include automated tiered storage. This approach enables organisations to move data dynamically, intelligently and efficiently among multiple storage tiers and RAID levels. This means our solution maximises the potential benefits of tiered storage, giving granular, real-time system intelligence; efficient data-movement schemes and almost unlimited scalability.





PartnerDirect